

New Terminal 1 Update

NEW
T1



Matt Harris
San Diego County Regional Airport Authority
2/13/24

New T1 Overall Project Scope

NEW
T1



- Terminal & Roadways
- Airside Improvements
- Administration Building
- Future Transit Station

MULTI-USE BIKE
AND PEDESTRIAN
PATH

NEW
T1

BRIDGE

AIRPORT ACCESS
ROADWAY

SOLAR TURBINES PARK

LAUREL ST

NORTH HARBOR DRIVE

On Airport Access Road

Milestones

NEW
T1

November 1, 2021

- New T1 construction began.

October 2023

- Earliest opening date for the new Administration Building.

Late 2024

- New T1 parking structure opens.

Late Summer 2025

- Earliest opening date for Phase 1A (+/- 20 gates).

Early 2028

- Earliest opening date for Phase 1B (balance of 30 gates).

Mid-2028

- Earliest completion date for Airside Improvements construction.

New T1 Features



More than 1 million square feet of terminal space



Outdoor seating terrace overlooking San Diego Bay



Children's play area



Expansive Security Checkpoints



19 New Restaurants and Shops



New On-Airport Roadway

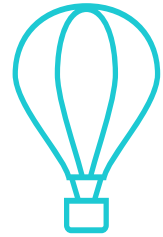


Parking structure



Lounge/Clubs

Sustainability Features



Air Quality



EV charging infrastructure



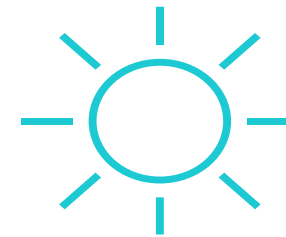
Stormwater capture and reuse system



Transit Access



Certifications



Solar Efficiency

Renderings

NEW
T1



Arrivals Roadway



Arrivals Curbside

Renderings

NEW
T1



Ticketing Area



Outdoor Seating Terrace

Renderings

NEW
T1



Baggage Claim



Parking Plaza

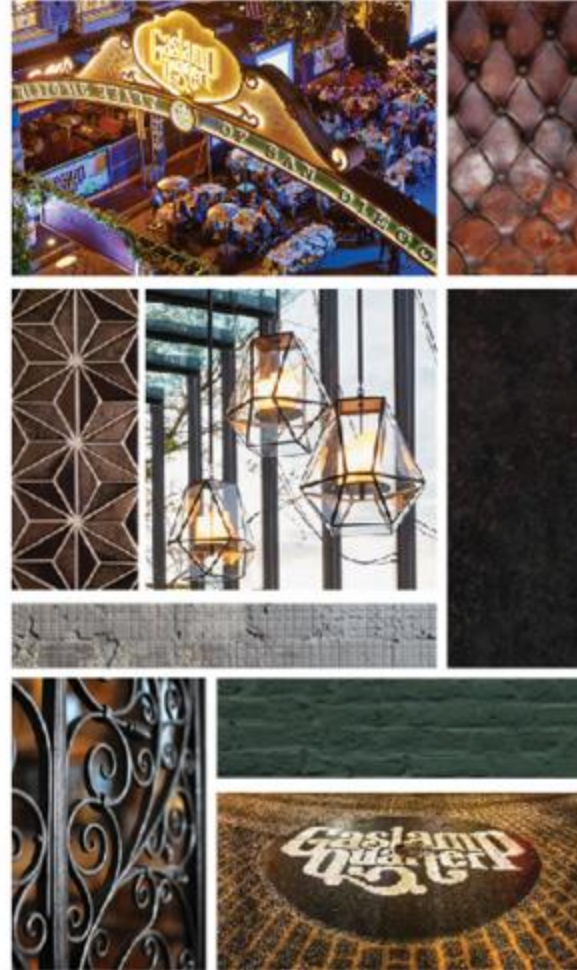
Concessions Program

San Diego Cultural Districts

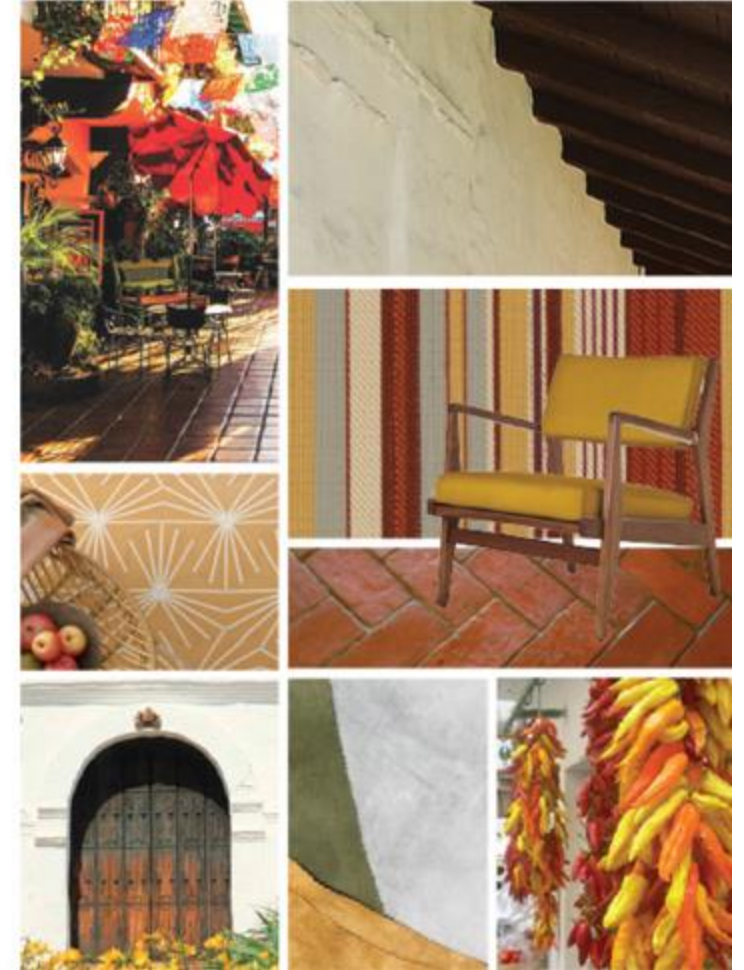
Seaside



Urban



Heritage



Concessions Development By the Numbers

19

New Locations
to Open in 2025

10

New Locations
to Open in 2028

32K

New Square Feet
of Restaurants

14K

New Square Feet
of Retail

250

% Increase in Space
vs. Current T1



Taste of San Diego & Beyond Coming in 2025



Cutwater Restaurant & Bar
Novecientos Grados
Parakeet Café
SIP Wine & Beer
The Taco Stand
Grab & Go



Ambrogio 15
Better Buzz
Lofty Coffee
Herb & Air
Luna Grill
McDonalds



Taste of San Diego & Beyond Coming in 2028

NEW
T1



NOVO Brazilian Kitchen
Kettner Exchange
Carnitas Snack Shack
El Pez Kitchen & Sushi
Puesto Mexican Kitchen



Understory
Chick-fil-A
Mostra Coffee
Mr. Moto Pizza



Construction Progress

Structural Steel Completion Celebration Event

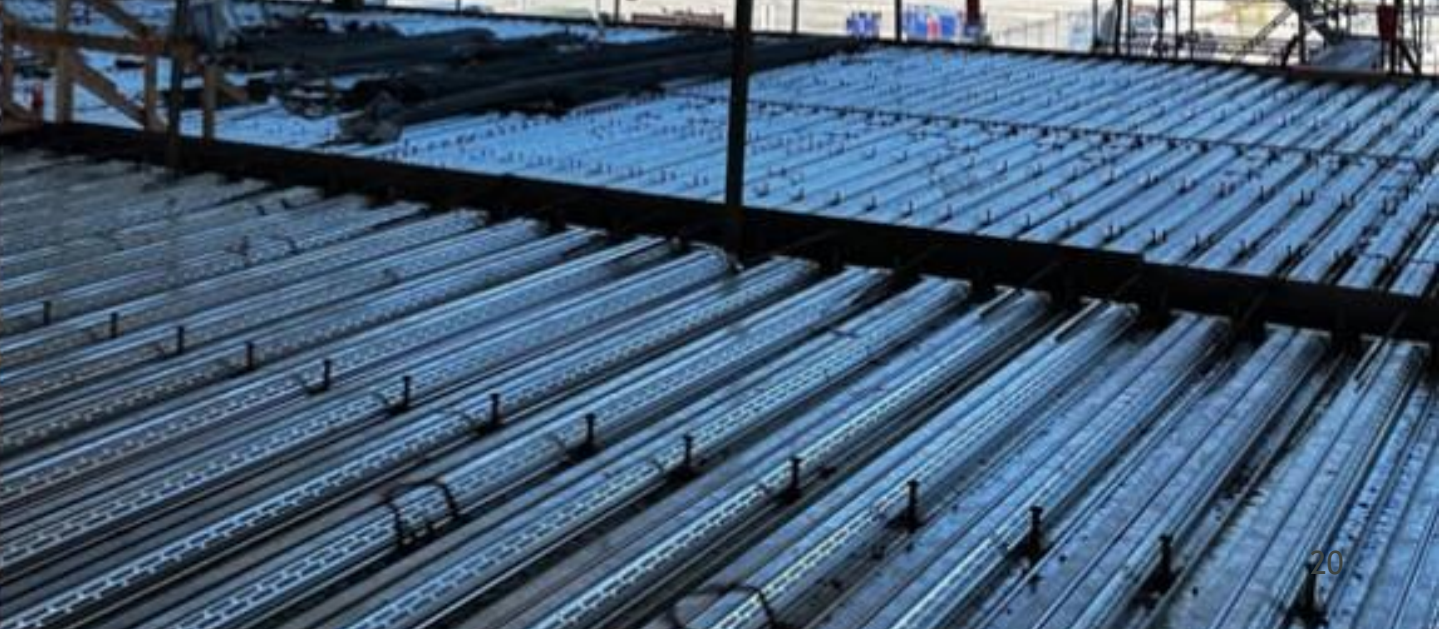


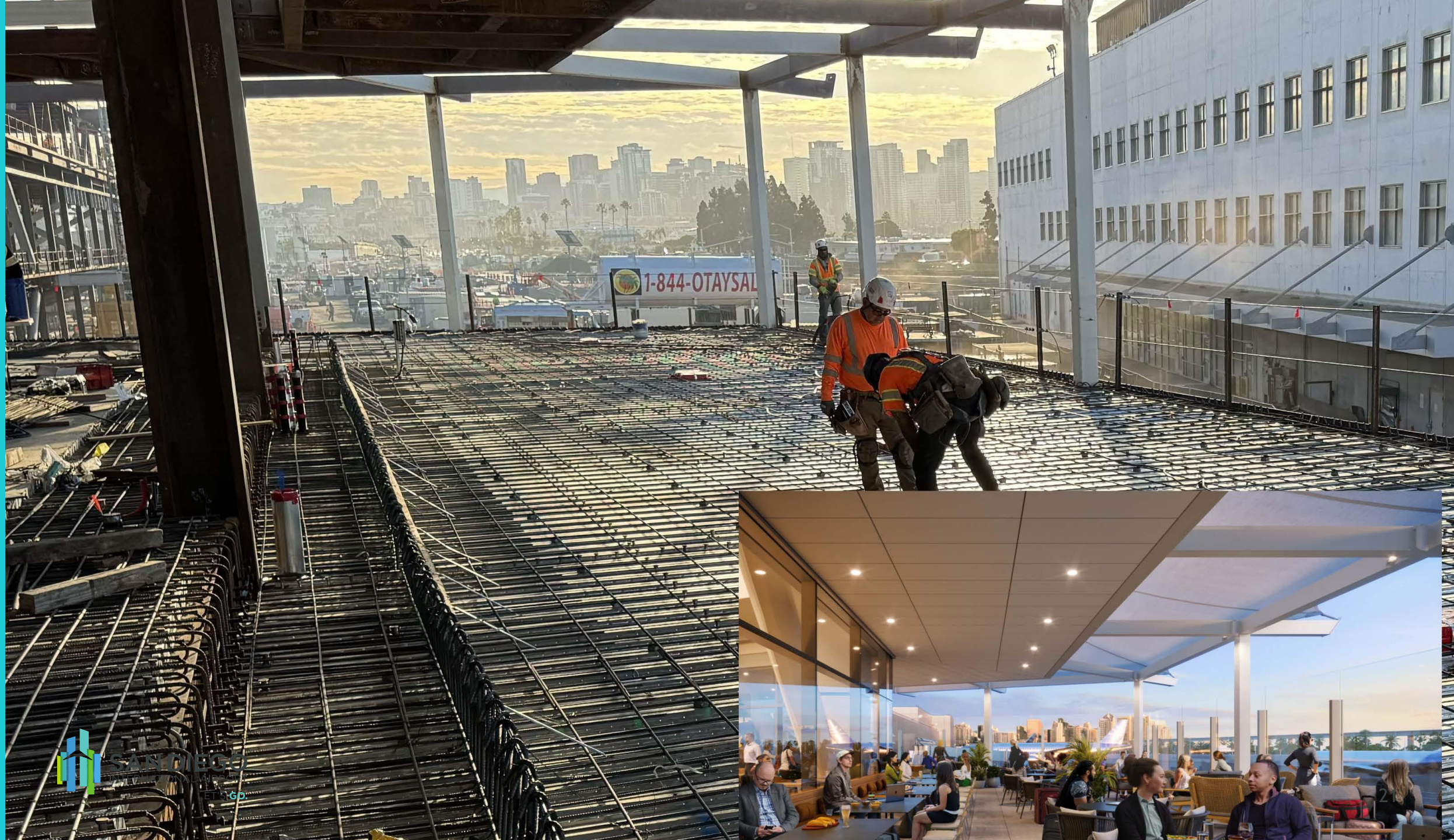




 **SAN DIEGO**
INTERNATIONAL AIRPORT
LET'S GO.



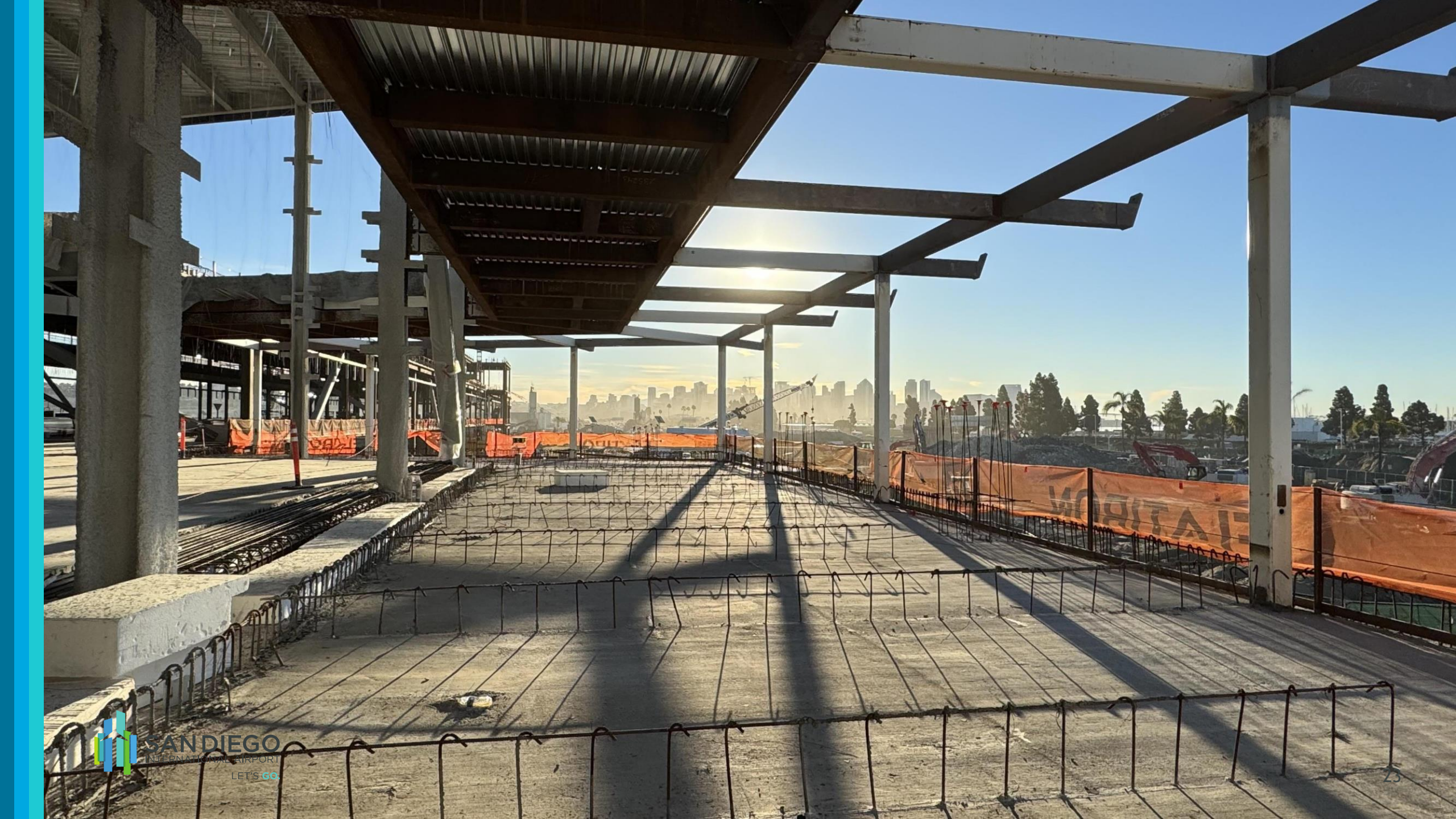




1-844-OTAYSAL











Flying into/out of SAN? Plan Ahead!

NEW
T1

Get here early

- Construction will impact your journey.
- Plan to arrive at least two hours before your flight.

Use public transit or other modes of transportation

- Try the Trolley, 992 MTS bus, Coaster, and/or the San Diego Flyer shuttle.
- The San Diego Flyer is a convenient last mile connection between the Old Town Transit Center and the airport.

Make parking reservations

- If you plan to park at the airport, make parking reservations in advance.
- Parking reservations are for Terminal 2 Parking Plaza or valet.
- If flying from Terminal 1, use the Terminal Loop Shuttle which will bring you to/from Terminal 2 to/from Terminal 1.

Stay Connected



Email	Go in the Know email newsletter (opt in)	
	New T1 Navigator (opt in)	
	NewT1Info@san.org	
Social media	Twitter	@SanDiegoAirport
	Facebook	/SanDiegoAirport
	Instagram	@SanDiegoAirport
Website	NewT1.com	
	San.org	
Mobile	Opt-in text messaging	Text UPDATES to 36017





Thank You!